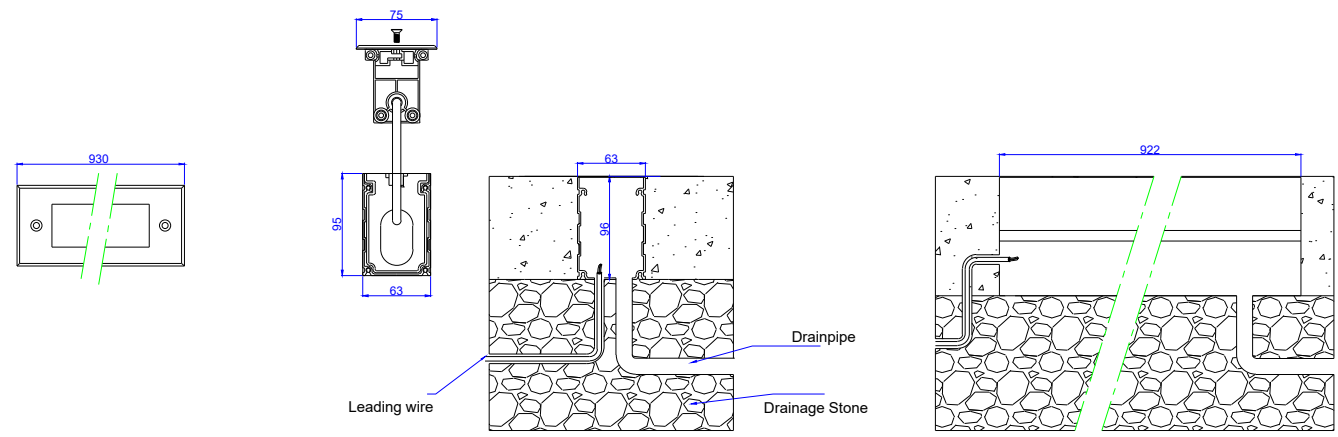


5 4 3 2 1

C D



C C

B B

INSTALLATION PROCEDURES:

- 1) PUT THE MOUNTING SLEEVE INTO THE GROUND. MAKE SURE THE TOPPER SIDE IS SAME LEVEL WITH GROUND SURFACE. (USE WATER DRAINAGE IS HIGHLY RECOMMENDED TO AVOID ACCUMULATION OF WATER AROUND THE FIXTURE.)
- 2) CONNECT WIRING IN ACCORDANCE WITH LOCAL CODES OR STANDARDS. THE WIRE REQUIRED TO RUN THROUGH THE MOUNTING SLEEVE.
- 3) ATTACH THE FIXTURE INTO THE MOUNTING TRIM USING STAINLESS STEEL SCREWS. (MAKE SURE THAT WIRE IS CONNECTED AND SEAL CONNECTIONS)
- 4) RESTORE POWER TO CIRCUIT

THE ABOVE INSTALLATION GUIDELINES ARE TYPICAL PROCEDURES. ACTUAL WIRING AND INSTALLATION DEPENDS ON SITE CONDITION. PLEASE CONSULT FACTORY FOR DETAILS.

A A

DRAWN BY	LGB	DESCRIPTION		
CHECKED BY		Installation Guides for DIG Inground Wallwasher		
DATE	27/2/2021	DWG. NO.	DIG SERIES INSTALLATION GUILLE 01	
TITLE		VERSIONS	SCALE	SIZE

5 4 3 2 1